

## Trinip Pickup Felt – Wear Resistance

REGION:	Northeast	
MACHINE:	PM# XX	
POSITION:	Pickup	
GRADE:	CGW / CFS	
BASIS WEIGHT:	38-80#/3300	56-118 gsm
SPEED:	4150 fpm	1265 m/min
PRESS LOAD:	400 – 500 - 580 pli	

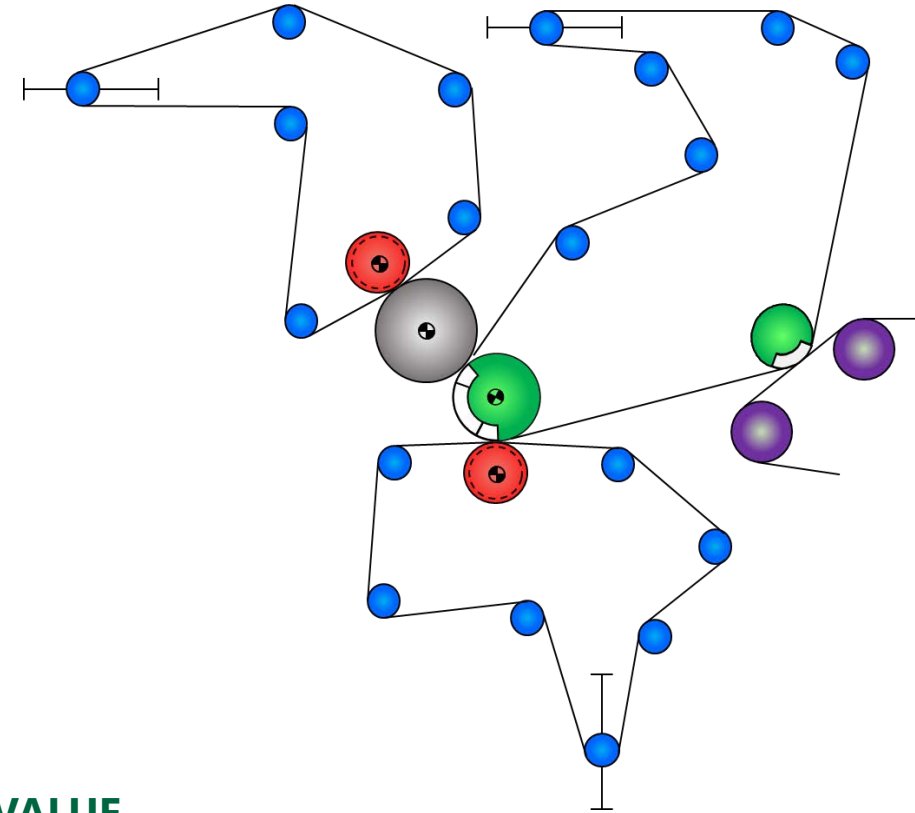
### OBJECTIVES:

Mill was struggling to get to 42 day felt life.  
Averaging 33 days with a range of 21-42 days.  
Felts were seeing very high weight loss at 42 days.  
Issues with felt base marking in the sheet at end of life.

### RESULTS:

- Initial trial felt ran 42 days and was scheduled off.
- Very good performance the last week of the felt life.
- Returned analysis showed a reduction in the weight loss.
- Surface of felt looked very good compared to previous felts at 42 days. Base marking issues eliminated.
- **UPDATE: New record felt life of 47 days! Used felt looked very excellent. Weight loss with the AccuFlow 2 much lower than the AccuFlow 1.**

AccuFlow™ 2

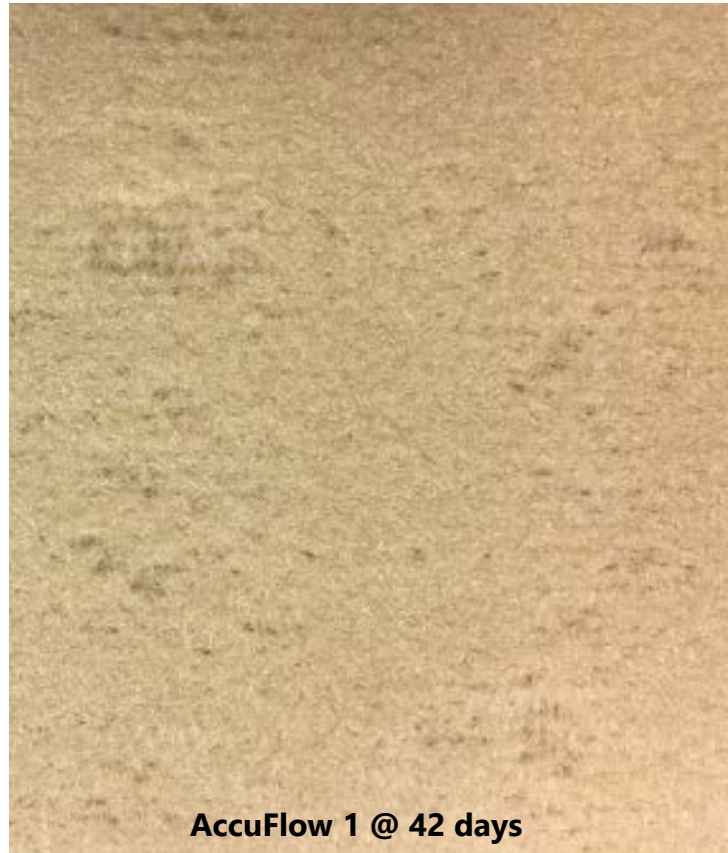
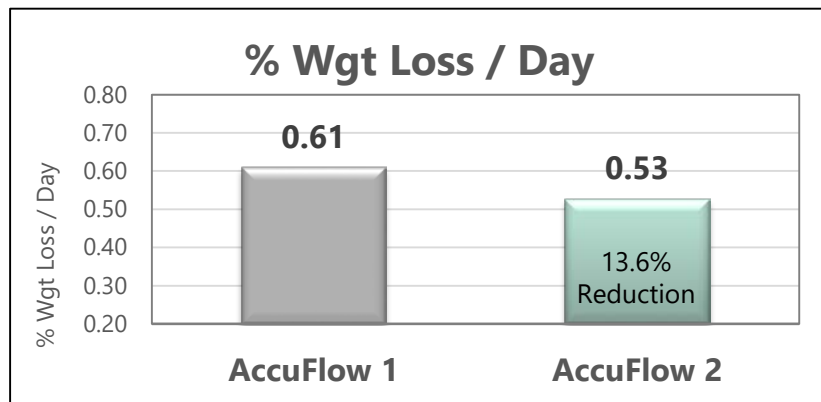
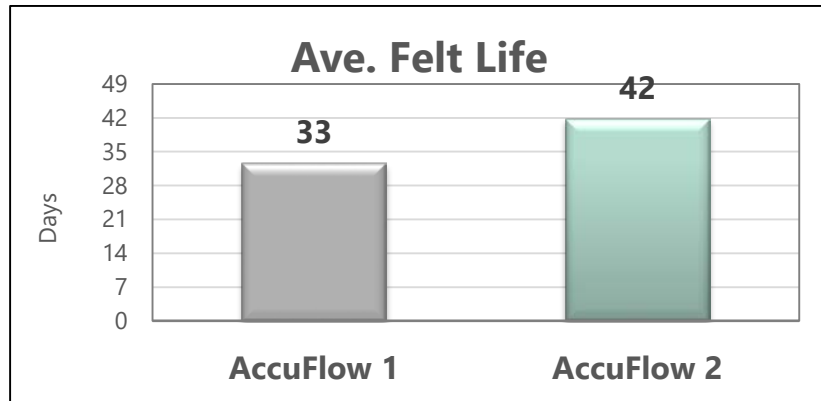


### VALUE

Able to get to 42 days with life still remaining in the felt.  
Reduce clothing cost by eliminating 2 shutdowns @ 42 days.  
Save \$93,968 – cost of 2 pickup felts.  
Eliminated sheet base mark – improved sheet quality

CASE STUDY

 ASTENJOHNSON



Recent AccuFlow 2 ran 47 days!  
 Weight loss reduced to – 22.0%.  
 0.47% / Day!